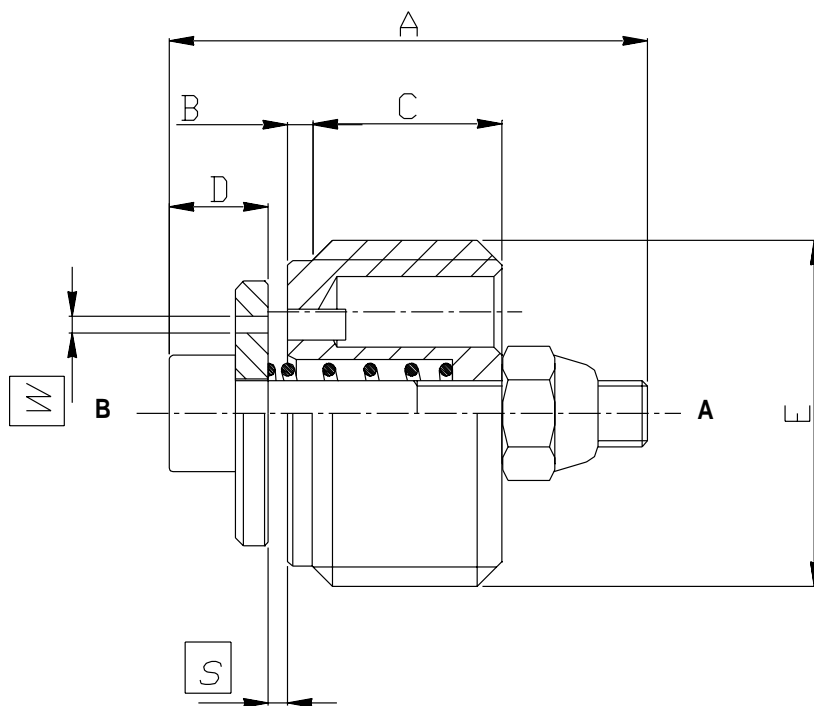




**Caratteristiche - Rating**

Dimensione/Dimension		01	015	02	03	04	05
Pressione max/Max Pressure	bar	350	350	350	350	350	350
Portata max/Max Flow	l/min	25	25	45	70	140	180
Portata standard/Setting Flow	l/min	12	12	40	65	125	150
Apertura S standard/Setting S		0.8	0.8	1.5	1.8	2.2	2.6

N.B.: per l'utilizzo di altri parametri vogliate consultarci  
 Note: where measurements are critical request certified drawings



**Dimensioni e pesi - External dimension and weight**

Dimensione/Dimension	A	B	C	D	E GAS	E SAE	Peso Weight Kg
<b>01</b>	16	1	7	4.5	1/4		0.010
<b>015</b>	16	1	7	4.5		9/16-18	0.010
<b>02</b>	20	1.5	9.5	5	3/8	3/4-16	0.015
<b>03</b>	24	1.5	11.5	6.5	1/2	7/8-14	0.025
<b>04</b>	28	2.5	15.5	6.5	3/4	11/16-12	0.045
<b>05</b>	33	1.5	18.5	8.5	1	15/16-12	0.098

NOTA: il valore di registrazione S deve essere 1.5-2 volte il valore della portata massima di discesa.  
 NOTE: setting S is calculated to 1.5 times the maximum descend flow from the actuator port to control.

**For more information please contact:**



**2 Swallow Drive, Alsager, Stoke on Trent, Staffs, ST7 2GJ**

You can telephone or fax us in the UK on:

**Tel: 08450 043440**

**Fax: 01270 876281**



**Web: <http://www.zeushydratech.co.uk>**

Zeus Hydratech Limited