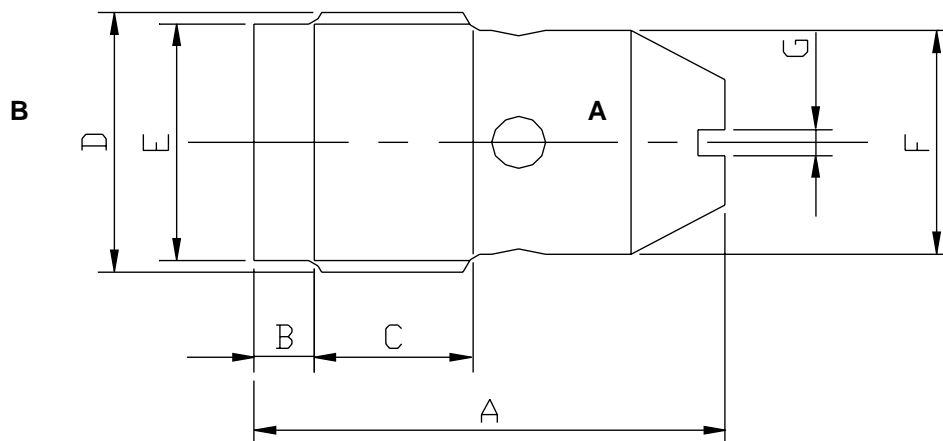


Caratteristiche - Rating

Dimensione/Dimension		01	015	02	03
Pressione max/Max Pressure	bar	350	350	350	350
Portata max/Max Flow B → A	l/min	10	10	16	45
Portata max/Max Flow A → B	l/min	15	15	25	60

N.B.: per l'utilizzo di altri parametri vogliate consultarci
Note: where measurements are critical request certified drawings



Dimensioni e pesi - External dimension and weight

Dimensione/Dimension	A	B	C	D GAS	D NPT	D SAE	E	F	G	Peso Weight kg
01	23	-	9	1/4	1/4		-	10.5	1.2	0.01
015	23		9			9/16-18		10.5		0.01
02	28	2.5	10.5	3/8	3/8	3/4-16	14.5	14	1.5	0.026
03	35	5	12	1/2	1/2	7/8-14	18	17	2.2	0.05

For more information please contact:



2 Swallow Drive, Alsager, Stoke on Trent, Staffs, ST7 2GJ

You can telephone or fax us in the UK on:

Tel: 08450 043440

Fax: 01270 876281



Web: <http://www.zeushydratech.co.uk>

Zeus Hydratech Limited