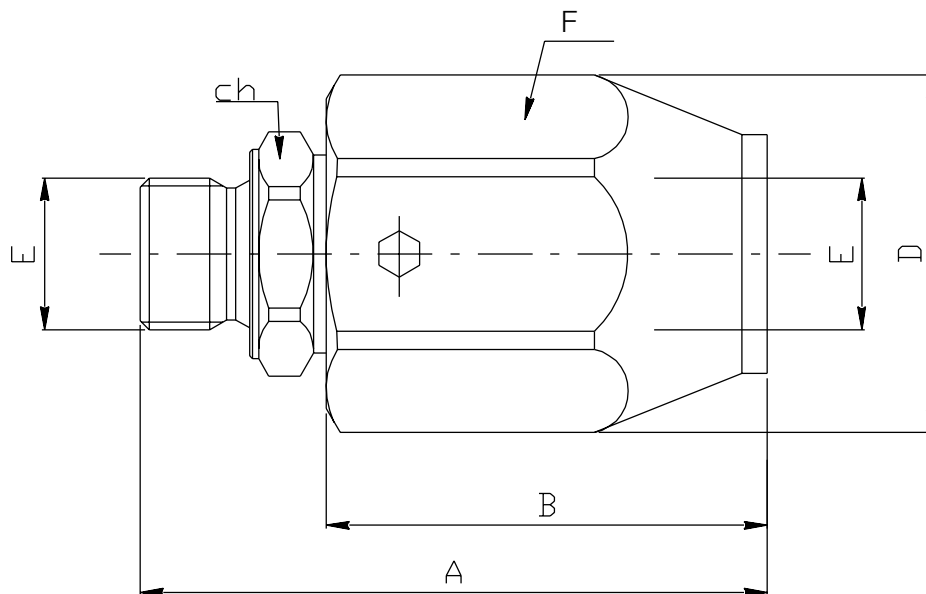


**Caratteristiche - Rating**

Dimensione/Dimension		005	01	015	02	03	04	05	06	07	09
Portata max/Max Flow	l/min	15	25	25	45	80	120	150	200	250	300
Pressione max/Max Pressure	bar	400	400	400	400	360	310	280	250	210	180
Velocità rot. max/Max Rotary Speed	giri/min	500	500	500	400	370	280	230	200	170	140

N.B.: per l'utilizzo di altri parametri vogliate consultarci  
Note: where measurements are critical request certified drawings



**Dimensioni e pesi - External dimension and weight**

Dimensione/Dimension	A	B	D	E GAS	E NPT	E SAE	F	CH	Peso Weight kg
<b>005</b>						7/16-20			
<b>01</b>	62	42	33	1/4	1/4		CH 30	19	0.21
<b>015</b>						9/16-18			
<b>02</b>	65	44	37	3/8	3/8	3/4-16	CH 34	24	0.27
<b>03</b>	74	50	40	1/2	1/2	7/8-14	CH 36	27	0.33
<b>04</b>	80	50	49	3/4	3/4	11/16-12	CH 45	34	0.54
<b>05</b>	90	57	60	1	1	15/16-12	ø 60	41	1.03
<b>06</b>	98	63	60	1 1/4	1 1/4	1 5/8-12	ø 60	50	1.14
<b>07</b>	108	70	70	1 1/2	1 1/2	1 7/8-12	ø 70	55	1.68
<b>09</b>	115	76	85	2	2		ø 85	65	2.52

**For more information please contact:**



**2 Swallow Drive, Alsager, Stoke on Trent, Staffs, ST7 2GJ**

You can telephone or fax us in the UK on:

**Tel: 08450 043440**

**Fax: 01270 876281**



**Web: <http://www.zeushydratech.co.uk>**

Zeus Hydratech Limited