



Applicazione

Sono speciali collettori che permettono il montaggio in linea delle valvole serie VUBA, VSC e VRD evitando la realizzazione di costose cavità.

Montaggio

Inserire le valvole all'interno della sede filettata prestando attenzione al senso di funzionamento

A richiesta

Zincatura nera – Misure speciali.

NOTE COSTRUTTIVE

Acciaio zincato giallo – Parte maschio con centraggio per rondella.

Application

They are specific line bodies where fit the cartridges VUBA, VSC and VRD type and reduce the expensive manufacturing cavity. They are available male/female or female/female type.

Instruction

Fit the valves into their line bodies. Check well exactly assembly direction.

Optional

Black zinc plated – Special dimension.

FEATURES

Steel body – Yellow zinc plated.

ESEMPIO D'ORDINAZIONE

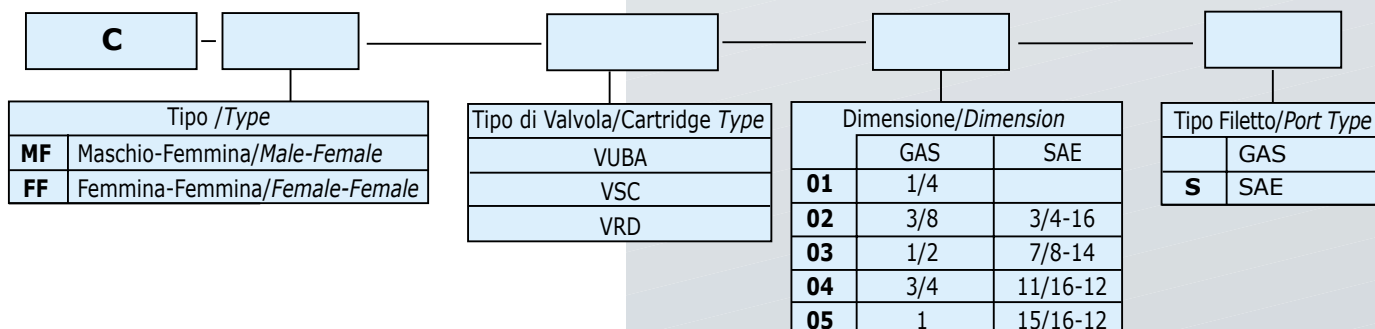
Tipo maschio femmina – Tipo di valvola VUBA
 - Dimensione 02 – Tipo filetto 3/8 GAS **C MF VUBA 02**

ORDERING CODE EXAMPLE

Male/Female type - VUBA cartridge type
 - 02 Dimension - 3/8 GAS Port thread **C MF VUBA 02**

Female/Female type - VSC cartridge type
 - 015 Dimension - 9/16-18 SAE Port thread
C FF VSC 015 S

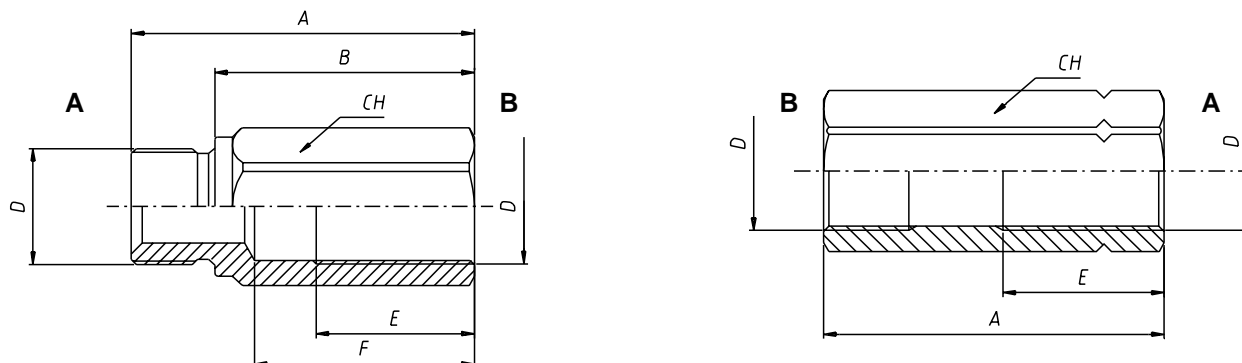
Codice d'ordinazione - Ordering code



Caratteristiche - Rating

Dimensione/Dimension	01	02	03	04	05
Pressione max/Max Pressure bar	300	300	300	300	250

N.B.: per l'utilizzo di altri parametri vogliate consultarci
Note: where measurements are critical request certified drawings



Dimensioni e pesi - External dimension and weight

	Dimensione/Dimension	A	B	D GAS	D SAE	E	F	CH	Peso Weight Kg
CMFVUBA	01	50	36	1/4		23	31	19	0.070
	02	58	43	3/8	3/4-16	27	40	22	0.095
	03	66	46	1/2	7/8-14	33	45	27	0.147
	04	78	55	3/4	11/16-12	36	49	32	0.225
	05	90	64	1	15/16-12	45	60	41	0.425
CFFVUBA	01	48		1/4		26		19	0.070
	02	58		3/8	3/4-16	27		22	0.098
	03	60		1/2	7/8-14	33		27	0.145
	04	76		3/4	11/16-12	36		32	0.222
	05	85		1	15/16-12	45		41	0.435
CMFVRD	01	78	64	1/4		35	57	19	0.080
	02	82	65	3/8	3/4-16	40	63	22	0.110
	03	96	77	1/2	7/8-14	45	72	27	0.165
	04	106	84	3/4	11/16-12	54	85	32	0.250
	05	135	106	1	15/16-12	63	105	41	0.470
CFFVRD	01	66		1/4		35		19	0.080
	02	70		3/8	3/4-16	39		22	0.110
	03	80		1/2	7/8-14	45		27	0.165
	04	100		3/4	11/16-12	54		32	0.250
	05	125		1	15/16-12	63		41	0.470
CMFVSC	01	61	50	1/4		35	44	19	0.070
	02	68	56	3/8	3/4-16	48	51	22	0.095
	03			1/2	7/8-14			27	0.147
CFFVSC	01	70		1/4		37		19	0.080
	02	76		3/8	3/4-16	42		22	0.110
	03	82		1/2	7/8-14	50		27	0.165

For more information please contact:



2 Swallow Drive, Alsager, Stoke on Trent, Staffs, ST7 2GJ

You can telephone or fax us in the UK on:

Tel: 08450 043440

Fax: 01270 876281



Web: <http://www.zeushydratech.co.uk>

Zeus Hydratech Limited